



*Royal Hamam*®

New Luxury Australian  
Jewellery brand

LOOKBOOK



RINGS



EARRINGS



NECKLACE



WRISTWEAR



Elly Meltzer

Royal Hamam was born from the love and fascination of travel. Having had the opportunity to travel to some of the most ancient and exotic places on Earth, impressions and imprints were made from an early age. This love affair with the exotic world was undertaken with my family, throughout India, Asia, the South Pacific & Northern Africa.

Now founder & designer of Australian jewellery label Royal Hamam, I travel with a keen eye: searching for the detail found in architecture, sculpture, and the culturally rich dialogue of ceramics, textiles and jewels, all of which tell a thousand tales. My designs are inspired from these influences, and are translated into jewellery that is made by hand, by artisans, who have been crafting in this trade for many generations. I design with the aim to create timeless, ageless, & luxuriously exotic jewellery.

Royal Hamam is here and ready to enter the global marketplace; full of energy, love and inspiration. I am thrilled to offer my jewels to you.

Welcome to the world of Royal Hamam.

Love,

*Elly*

*Royal Hamam®*





The Maharani Lily Bangle Silver  
Code: MB14



Maharani Jasmine Bangle Silver  
Code: MB16



The Polki Bangle Silver  
Code: MB17



Screen Goddess Med Silver  
Code: 7A



The Devi Ring  
Code: MR1

*Royal Hamam®*

\*Sterling silver and 22 carat gold plate



Artisanal.  
Designed by hand.  
Made by hand.







Warrior Woman Necklace  
Gold  
Code: ND/GD



The Rani Earrings  
Code: ME1



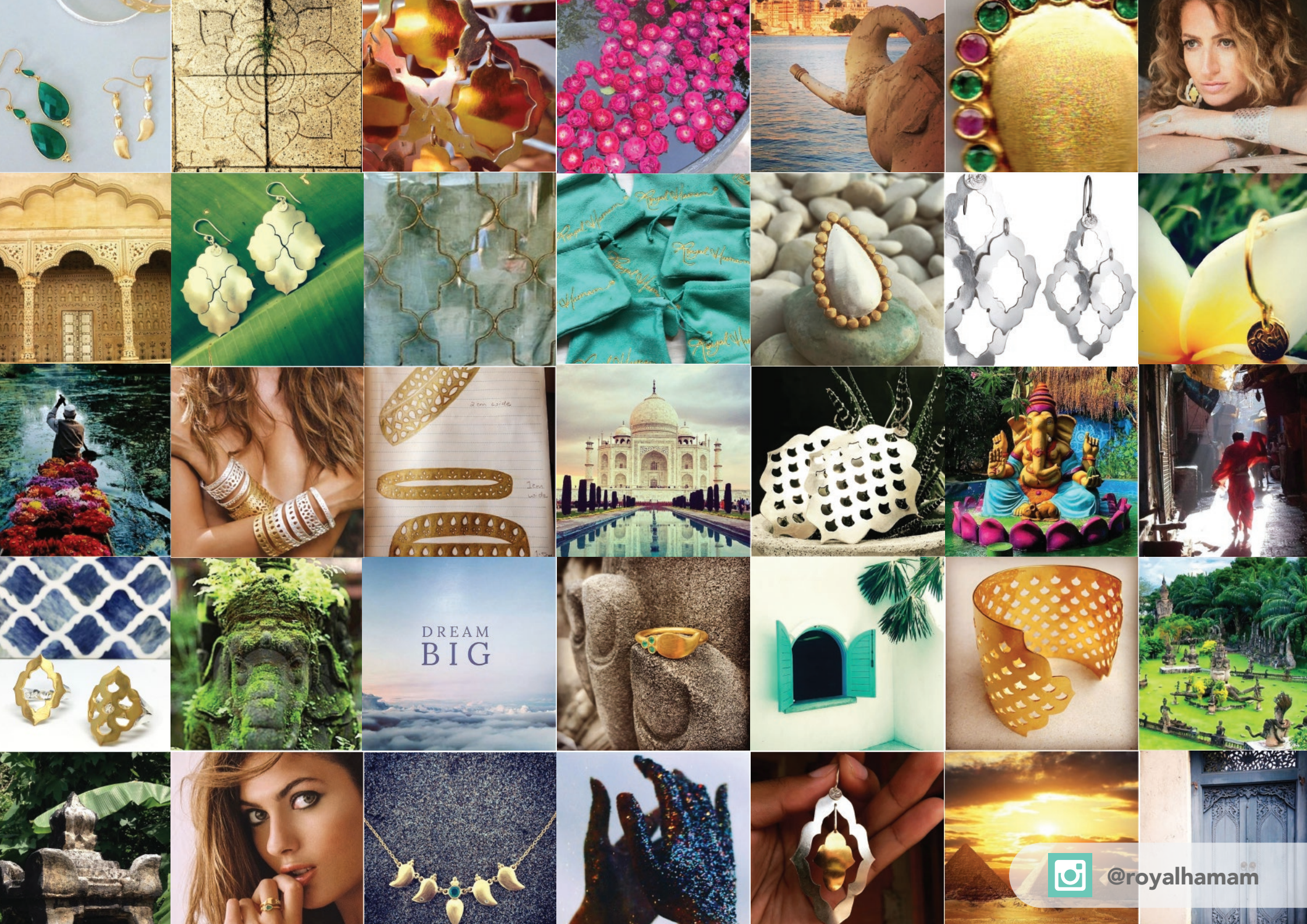
The Maharani Lily  
Bangle Gold  
Code: ME1



The Empress Ring  
Code: MR6

Royal Hamam®





DREAM  
BIG



@royalhamam





Mughal Curves Lrg Silver  
Code: 1



Princess Necklace Silver  
Code: NG



Warrior Cuff Silver  
Code: BB

Royal Hamam®

Taj Collection  
\*Sterling silver and 22 carat gold plate



# PRESS



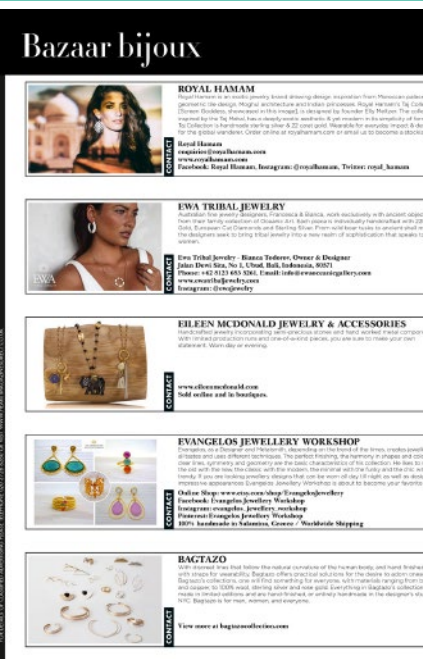
Tatler Magazine | United Kingdom | November



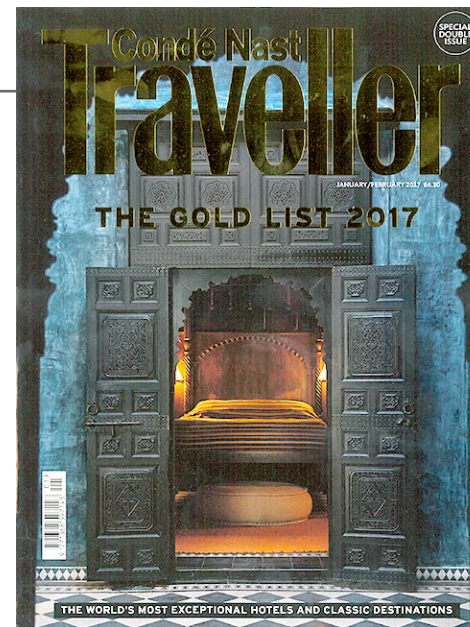
Harper's Bazaar UK | United Kingdom | October 2016



Tatler Magazine | United Kingdom | November



Harper's Bazaar UK | United Kingdom | October 2016



Condé Nast Traveller | United Kingdom | February 2017



HUSK | Australia | August 2016





The Maharani Earrings  
Code: ME31



The Lakshmi Ring  
Code: MR10



The Polki Bangle Gold  
Code: MB17G

Maharani Collection  
\*Sterling silver and 22 carat gold plate

*Royal Harem®*





Mystic Openings Sml Silver  
Code: 4A



Screen Goddess Sml Silver  
Code: 7C



Mughal Curves Sml Silver  
Code: 4D

To see our full collection visit us: [royalhamam.com](http://royalhamam.com)



*Royal Hamam*



*With Love  
Elly*

*Royal Hamam®*

[www.royalhamam.com](http://www.royalhamam.com)  
[enquiries@royalhamam.com](mailto:enquiries@royalhamam.com)

